

SUPPORTING INFORMATION

Figure 1. ^1H NMR spectrum of chlorin-chlorin dimer **4**.

Figure 2. 2DNMR spectrum of chlorin-chlorin dimer **4**.

Figure 3. Mass spectrum of chlorin-chlorin dimer **4**.

Figure 4. ^1H NMR spectrum of chlorin-chlorin dimer **10**.

Figure 5. 2DNMR spectrum of chlorin-chlorin dimer **10**.

Figure 6. Mass spectrum of chlorin-chlorin dimer **10**.

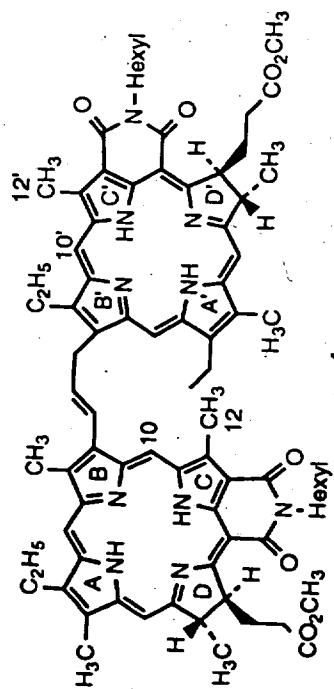
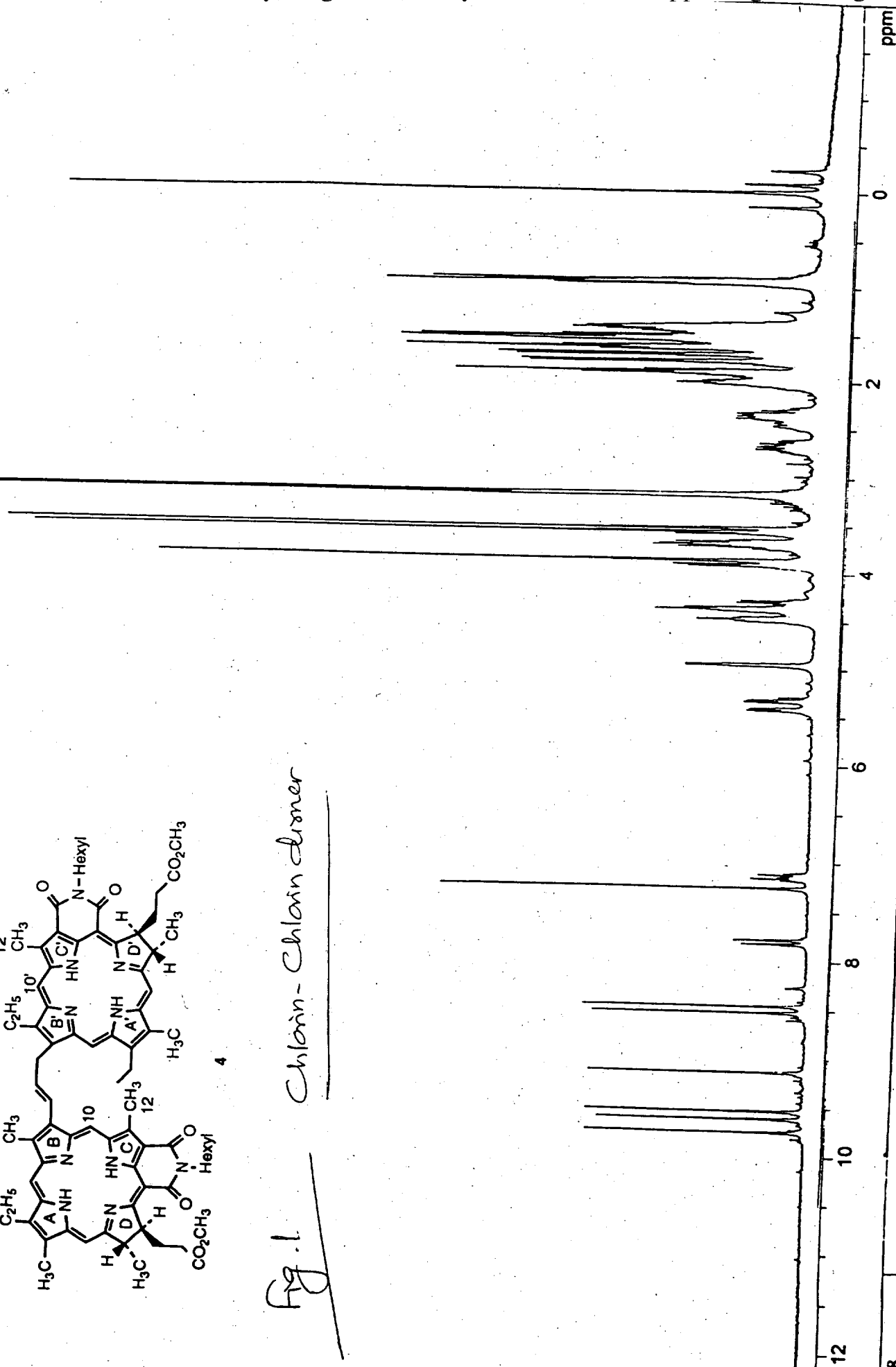


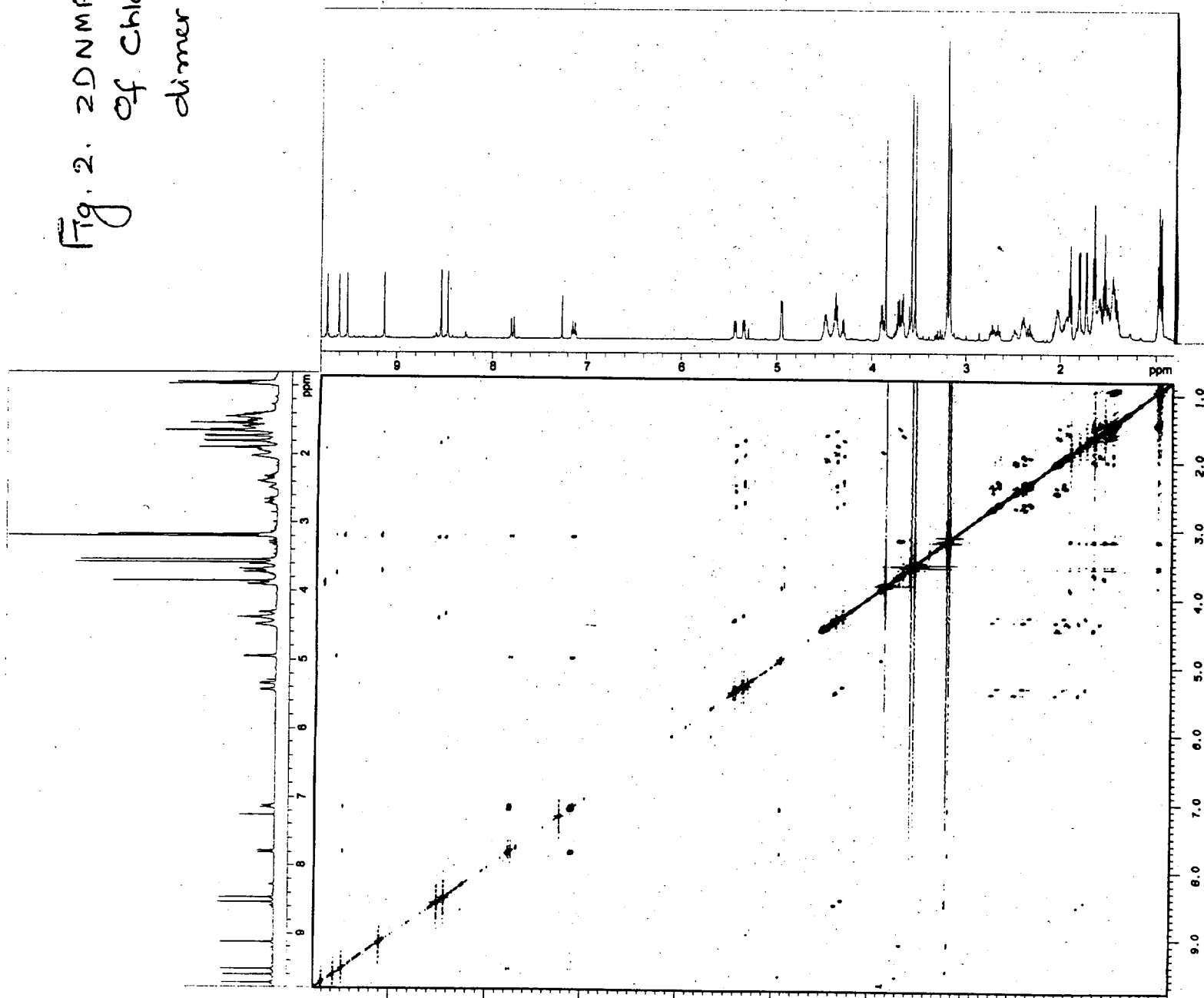
Fig. 1 Chlorin-Chlorin dimer

4



00.138
 ROESYPC ALL
 SWI: 6024
 P.W: 8.0 us/c
 OFI: 2204.6
 NA: 45
 PD: 40.0 sec
 PTSId: 8192
 LIB: 01
 USER: -- DATE: 09/02/98
 WinNuts - \$ANK0200 017

Fig. 2. 2D NMR Spectrum
of Chlorin-*a*-Chlorin
dimer 4



SPEC: ANK77A
 Samp: ANK-77-A (PANDEY)
 Comm: POS. FAB#m-NITROBENZYL ALCOHOL (1% TFA)
 Mode: EI +VE +HMR BSCAN (EXP) UP LR
 Oper: DUTTA
 Base: 1323.2
 Norm: 1323.2
 Peak: 1000.00 mmu
 Data: SY:ANK77A.DT

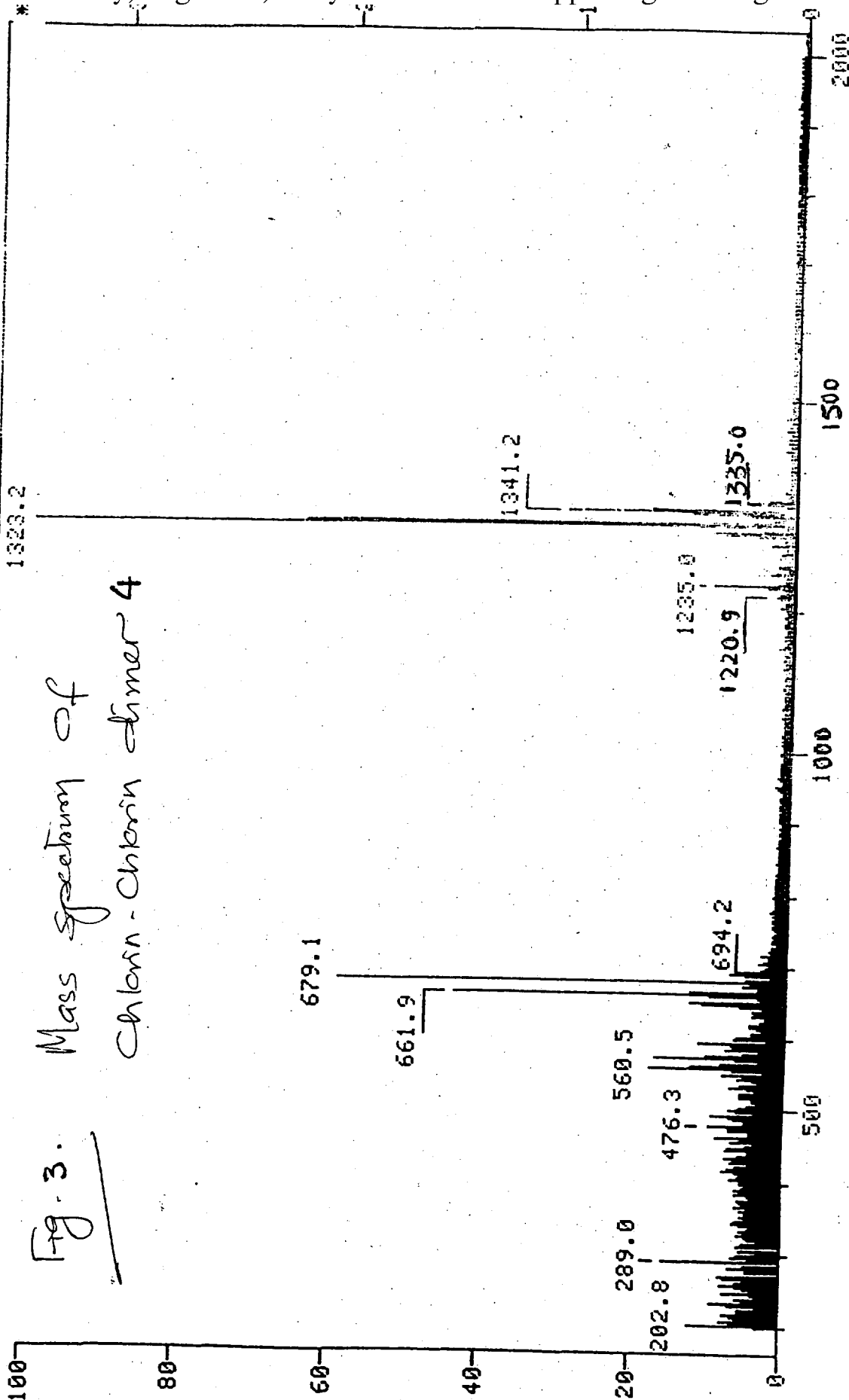
2-MAR-98 DERIVED SPECTRUM 9
 Start : 10:56:47 10

Inlet :
 Masses: 200 > 2000
 # peaks: 2077

Inten : 34100604
 RIC : 1568681344

+ 'ANK77A' /1>10 - 'BLN302
 1323.2

*Fig. 3. Mass spectrum of
 Chlora-Chlorin dimer 4*



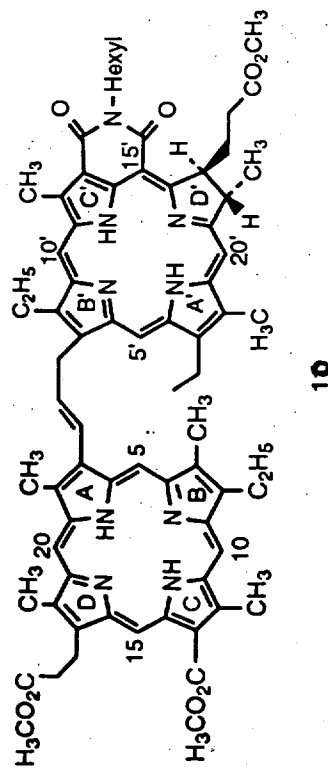


Fig. 4

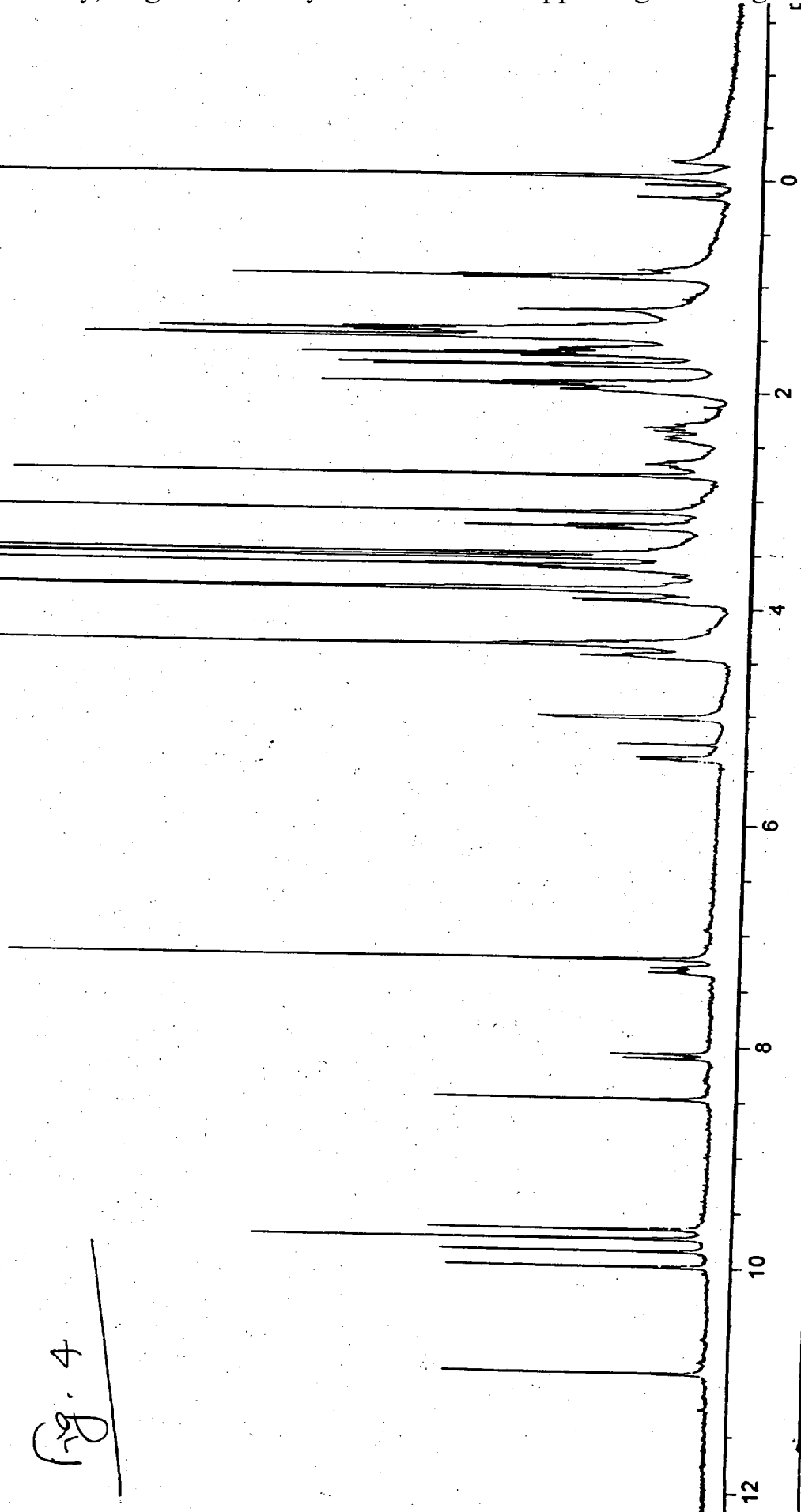
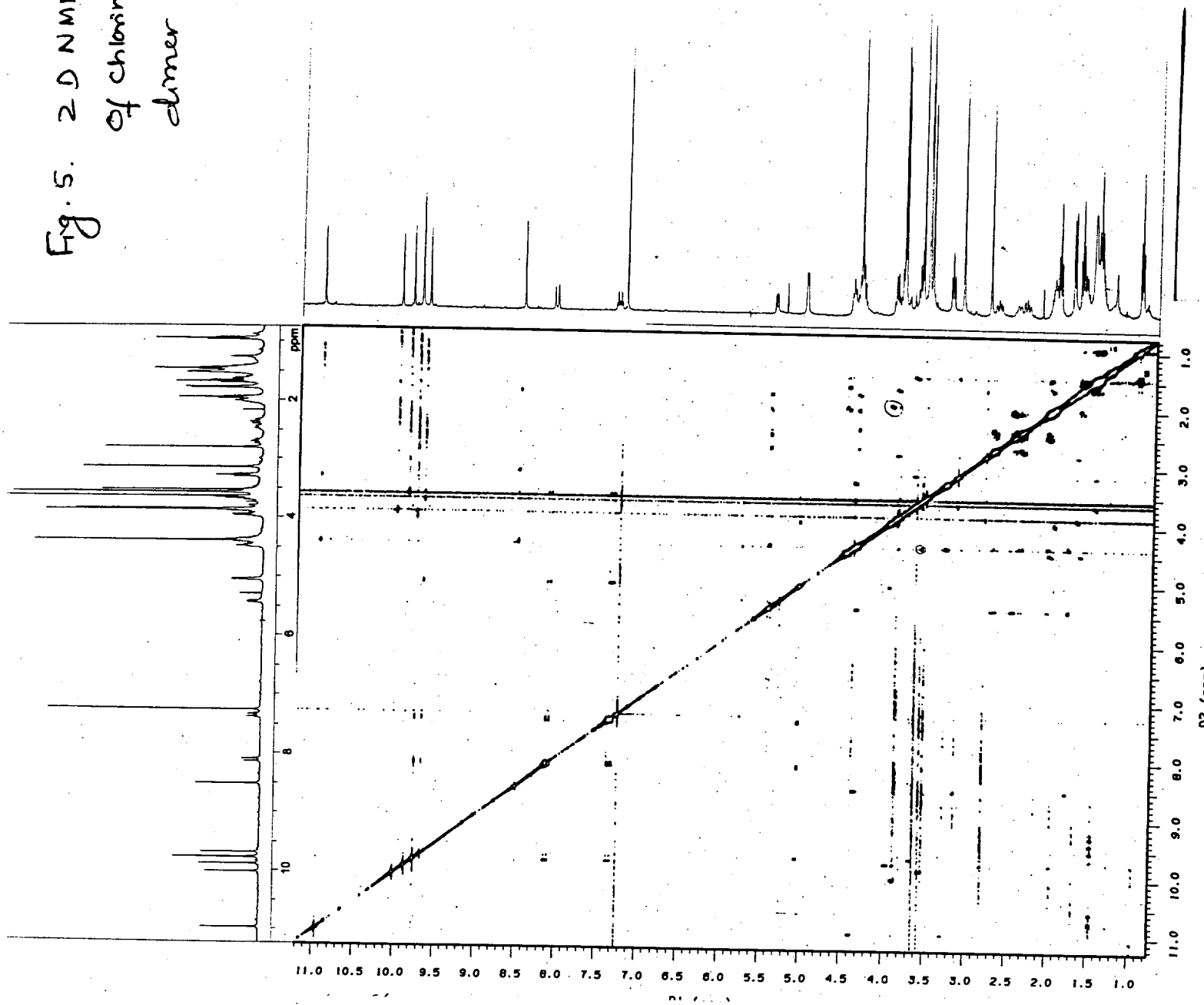


Fig. 5. 2D NMR Spectrum
of chlorin-porphyrin
dimer 10



SPEC: ANK264
Samp: ANK-264 (PANDEY) 2-MAR-98 DERIVED SPECTRUM 9
Comm: POS. FAB**m*-NITROBENZYL ALCOHOL (1% TFA) Start : 11:12:55 10
Mode: EI +VE +HMR BSCAN (EXP) UP LR
Oper: DUTTA
Base: 306.9 Inlet : Masses: 200 > 2000
Norm: 306.9 RIC : 185321456 # peaks: 1890
Peak: 1000.00 mmu
Data: SY:ANK264.DT + 'ANK264' /1>10 - 'BLN302'

